



Engineering & Design

www.colliersengineering.com

Copyright © 2022. Colliers Engineering & Design. All Rights Reserved. This drawing and all the information contained herein is authorized for use only by the party for whom the services were contracted or to whom it is certified. This drawing may not be copied, reused, disclosed, distributed or relied upon for any other purpose without the express written consent of Colliers Engineering & Design.

Doing Business as 



PROTECT YOURSELF  
ALL STATES REQUIRE NOTIFICATION OF  
EXCAVATORS, DESIGNERS, OR ANY PERSON  
PREPARING TO DISTURB THE EARTH'S  
SURFACE ANYWHERE IN ANY STATE.  
Know what's below.  
Call before you dig.  
FOR STATE SPECIFIC DIRECT PHONE NUMBERS  
VISIT: WWW.CALL811.COM

REV	DATE	DESCRIPTION	DRAWN BY	DATE	DESCRIPTION
1	3/15/23	REVISIONS	J.F.M.		

**PRELIMINARY**

**PRELIMINARY CONCEPTUAL PLAN**

**FOR**

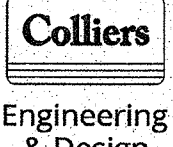
**SUMMERVILLE INDUSTRIAL PARK**

**3390 NYS ROUTE 94**

**VILLAGE OF CHESTER**

**ORANGE COUNTY**

**NEW YORK**



Engineering & Design

WESTCHESTER  
400 Columbus Avenue,  
Suite 180E  
Valhalla, NY 10595  
Phone: 914.347.7500  
COLLIERS ENGINEERING & DESIGN, LLC  
DOING BUSINESS AS MASER CONSULTING  
ENGINEERING & LAND SURVEYING

SCALE:	DATE:	DRAWN BY:	CHECKED BY:
AS SHOWN	10/17/22	J.F.M.	P.J.G.

PROJECT NUMBER:	DRAWING NAME:
22010640A	R-TURN-TRUCK

SHEET TITLE:

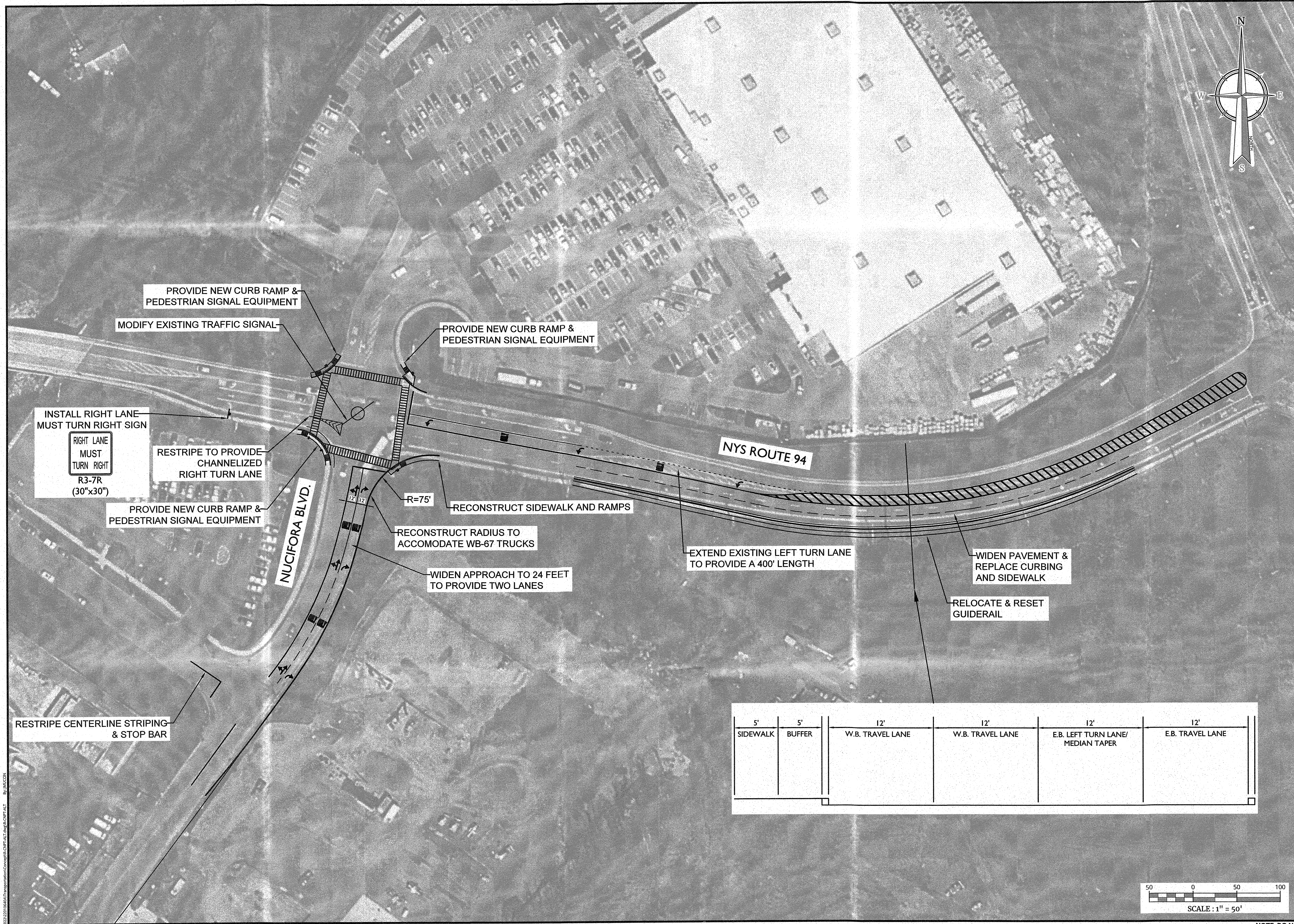
**TURNING TRACK PLAN (WB-67)**

SHEET NUMBER:

**1 of 1**

NOTE: DO NOT SCALE DRAWINGS FOR CONSTRUCTION.





Engineering & Design

[www.colliersengineering.com](http://www.colliersengineering.com)

Copyright © 2023. Colliers Engineering & Design All Rights Reserved. This drawing and all the information contained herein is authorized for use only by the party for whom the services were contracted or to whom it is certified. This drawing may not be copied, reused, disclosed, distributed or relied upon for any other purpose without the express written consent of Colliers Engineering & Design.

Doing Business as

PROTECT YOURSELF  
ALL STATES REQUIRE NOTIFICATION OF  
EXCAVATORS, DESIGNERS, OR ANY PERSON  
PREPARING TO DISTURB THE EARTH'S  
SURFACE ANYWHERE IN ANY STATE  
Know where below.  
Call before you dig.  
FOR STATE SPECIFIC DIRECT PHONE NUMBERS  
VISIT: WWW.CALL811.COM

REV	DATE	DESCRIPTION
1	10/17/22	DRIVED LAYOUT AND ADJUST CROSSWALKS

PRELIMINARY

PRELIMINARY CONCEPTUAL PLAN  
FOR  
SUMMERVILLE INDUSTRIAL PARK  
  
3390 NYS ROUTE 94  
VILLAGE OF CHESTER  
ORANGE COUNTY  
NEW YORK

WESTCHESTER  
400 Columbus Avenue,  
Suite 1806  
Valhalla, NY 10595  
Phone: 914.347.7500  
COLLIERS ENGINEERING & DESIGN, P.C.  
DOING BUSINESS AS A MAJOR CONSULTING  
ENGINEERING & LAND SURVEYING

SCALE:	DATE:	DRAWN BY:	CHECKED BY:
AS SHOWN	10/17/22	J.F.M.	P.J.G.

PROJECT NUMBER:	DRAWING NAME:
22010640A	R-CNPT-ALT

SHEET TITLE:  
CONCEPT PLAN

SHEET NUMBER:  
1 of 1

NOTE: DO NOT SCALE DRAWINGS FOR CONSTRUCTION.